



Stone Island  
Norr malmstorg 1, 103 92 Stockholm, Sweden  
S027 Store Installation, 14<sup>th</sup> June 2023

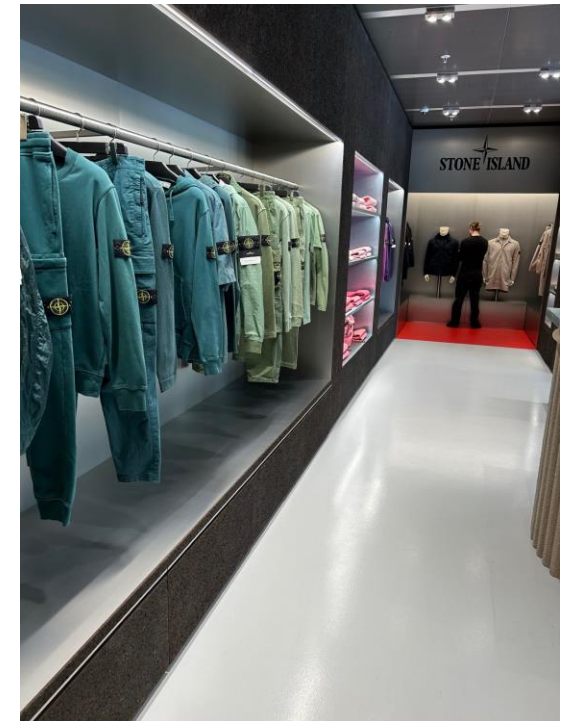
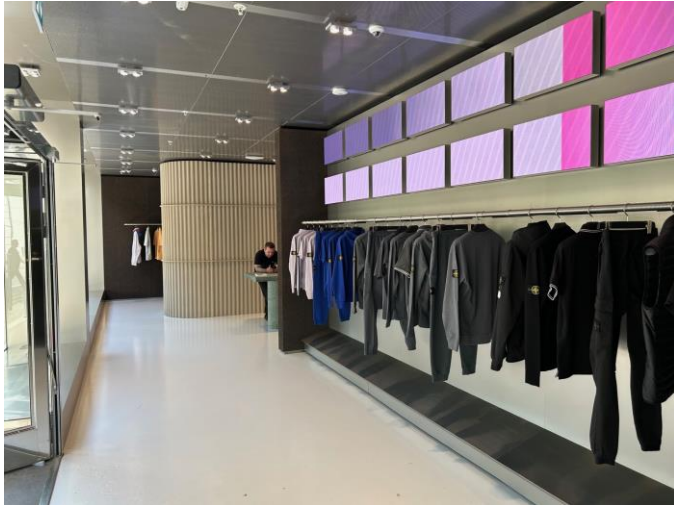
**setera**  
Cloud Communications





Stone Island  
Norrmalmstorg 1, 103 92 Stockholm,  
S027 Store Installation  
Store Floor

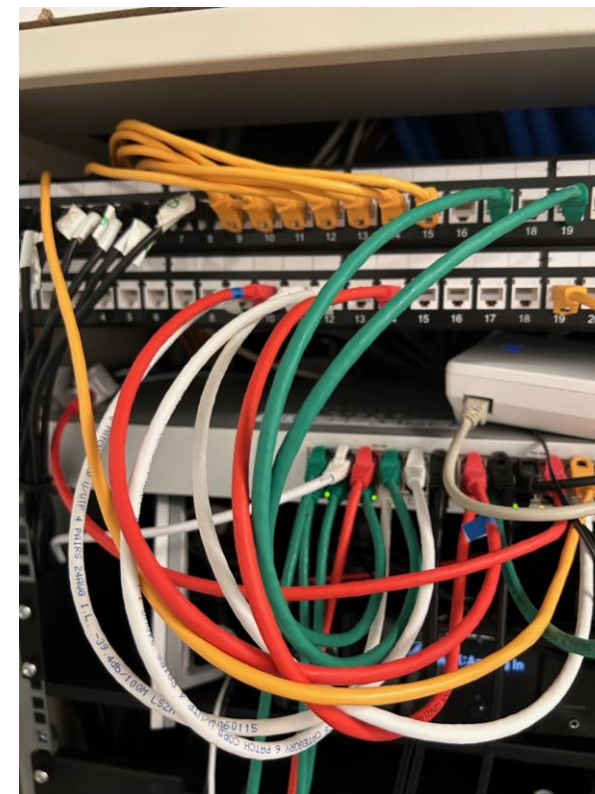
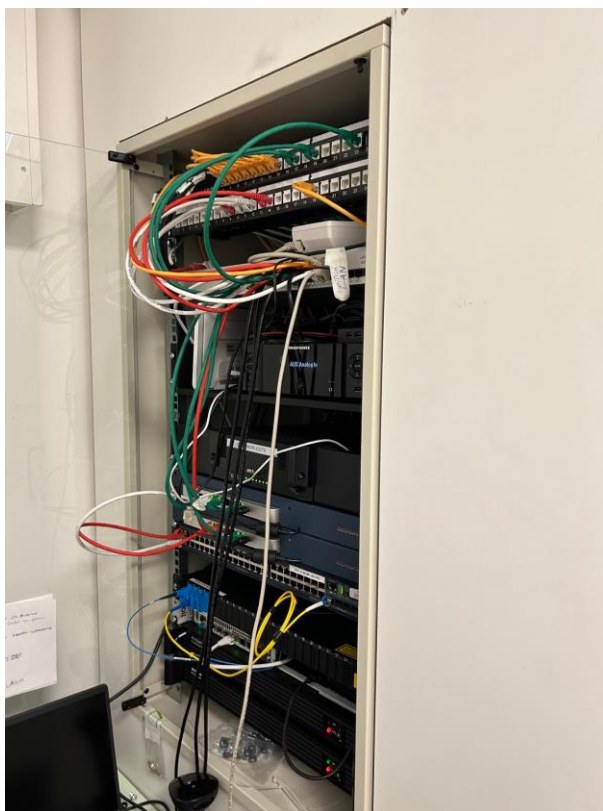
**setera**  
Cloud Communications







Stone Island  
Norrmlalmstorg 1, 103 92 Stockholm,  
S027 Store Installation  
Comms Cabinet – In small stockroom



RFP0, connected to Port 13 cross patch to lower port10



Stone Island  
Norrmlalmstorg 1, 103 92 Stockholm,  
S027 Store Installation  
DECT handsets in Stockroom



DECT Phones extension 201 & 202



Stone Island  
Norrrmalmstorg 1, 103 92 Stockholm,  
S027 Store Installation  
Store Floor  
RFP0 installed behind Cash Desk





RFP0 Centrally located in the middle of the store.





Stone Island  
Norrmlmstorg 1, 103 92 Stockholm,  
S027 Store Installation  
Observations

Date	📶 ms	📶 Mbps	📶 Mbps
 06.14.23 09:54 AM	2	88.83	95.86
 06.14.23 08:38 AM	1	91.84	95.18

- Observation 1: Speed test was fine.
- Observation 2 : The existing store number, forwarding and porting are required.
- Observation 3: The outgoing presented number was set to that of the store.
- Observation 4: The DECT handsets were left in their charging ports in the kitchen area of the stockroom.





Stone Island  
Norrmalmstorg 1, 103 92 Stockholm,  
S027 Store Installation  
Numbers and store details.



Public Customer Service number: **+46 8 1216 1010**

**Store Number +46 8 122 12060**

Public Service number: **+46812161011**

Store internal CS number: 3301000

Hunt Group: 4602700

DECT handsets: 201, 202,

Shop Floor Area: 100 sq.m, Stockroom area: 20 sq.m

- Store address: Norrmalmstorg 1, 103 92 Stockholm, Sweden
- Store number: **S027**
- Number of Desk Phones and DECT phones required: 2 **DECT (Shop Floor + BOH)**
- Target installation date: 15<sup>o</sup> June 2023
- Quantity of DDIs: **1 for Client Services and 1 for Customer Services**
- Filip Nilsson; +46 76-666 16 32





Stone Island  
Norrmalmstorg 1, 103 92 Stockholm,  
S027 Store Installation  
Standard and additional equipment required

Standard equipment	Quantity	Specifics
DECT 612 handsets	2	2 Phones and chargers in stockroom.
RFP 44	1	In Cash Desk cabinet
Additional equipment	Quantity	Specifics
LAN cables	2	